

# ITEP: Working with Tribes Across Climate, Human and Environmental Health

9<sup>th</sup> Annual National Tribal Public Health Summit

National Indian Health Board

May 23, 2018

Leanna Begay  
Northern Arizona University



**Mission:**

*“ITEP strengthens tribal capacity and sovereignty in environmental and natural resource management through culturally relevant education, research, partnerships and policy-based services”*



# ITEP – Tribes and Climate Change Program



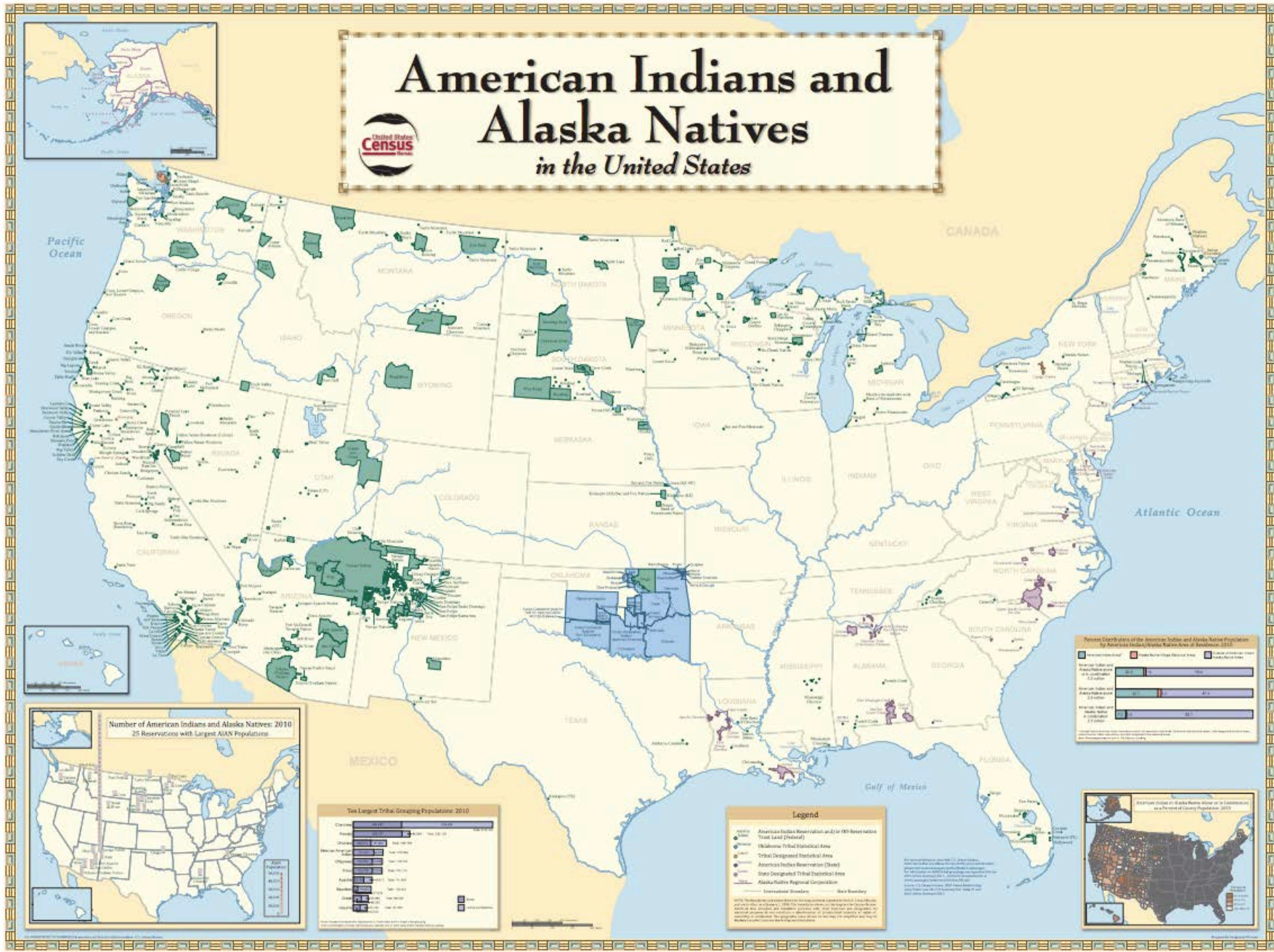
What do we do?

# What do we do?

- Since 2009, the program has assisted tribes in addressing climate change impacts
  - *In-person trainings & online webinars*
  - *Tools and technical assistance*
  - *Individual tribes, partnerships*
  - *Outreach and communication: webinars, calls, workgroups*
- Grant funded: *Individual tribes, federal agencies, other partnerships*



# American Indians and Alaska Natives in the United States



**Top Largest Tribal Grouping Populations: 2010**

Tribal Grouping	Population
Cherokee	306,000
Navajo	299,000
Chickasaw	290,000
Choctaw	287,000
Blackfoot	280,000
Apache	270,000
Armenian	260,000
Malay	250,000
Indonesian	240,000
Japanese	230,000

**Legend**

- American Indian Reservation and/or (OR) Reservation Trust Land (Federal)
- Oklahoma Tribal Statistical Area
- Tribal Designated Statistical Area
- American Indian Reservation (State)
- State Designated Tribal Statistical Area
- Alaska Native Regional Corporation
- International Boundary
- State Boundary



# 573 Tribes

## ~300 Federally Recognized Tribes



# Climate Change Adaptation Planning

- 3-4 Annual Trainings
- Coordinate With Host Tribal Community
- Regional Focus On:
  - Climate Change Data/Information
  - Climate Scientists and Local Tribal Experts
  - 3 Days of In-Class Instruction
  - 1 Field Trip



# Think about an Adaptation Planning Process

## Community Input

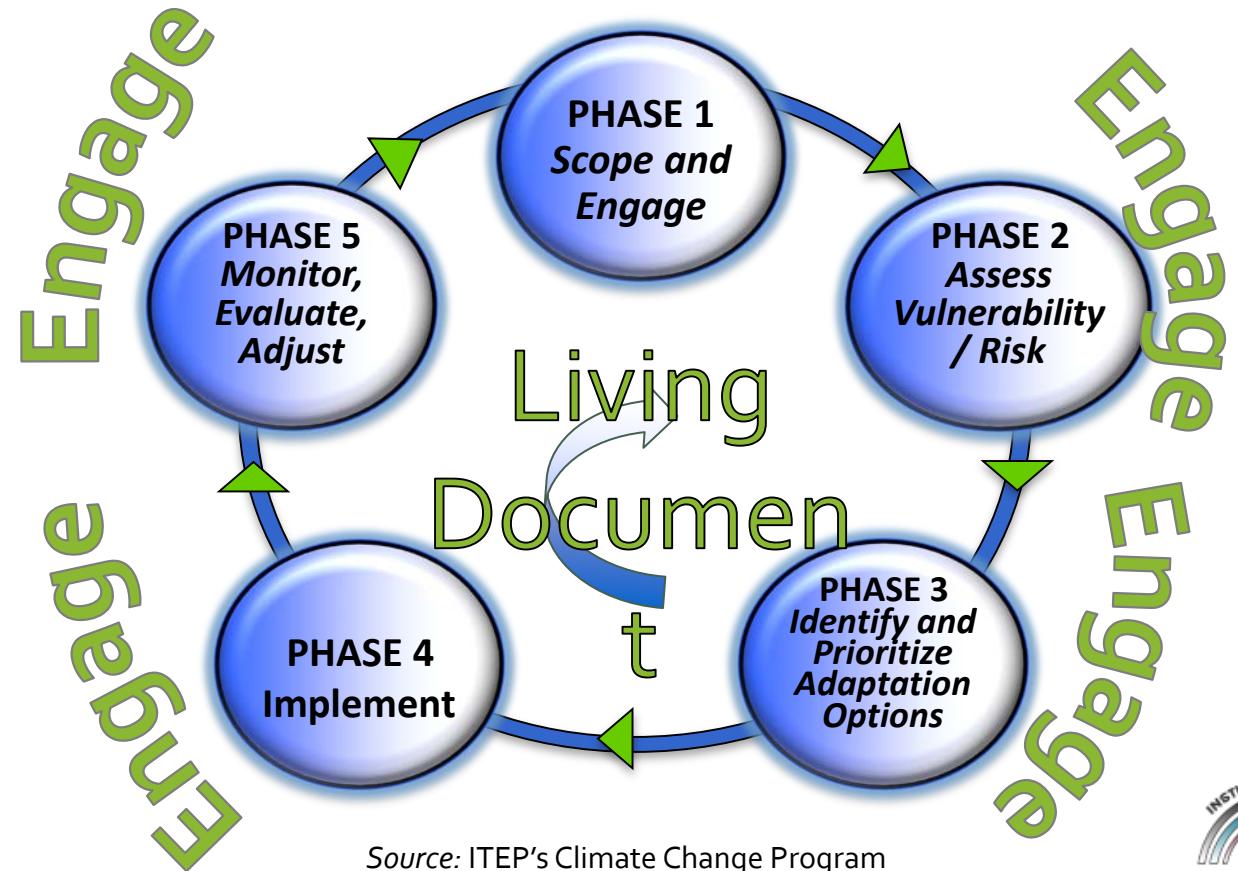
- Workshops
- Interviews w/ Elders, Youth, & Others
- Intergenerational Knowledge Exchange
- Surveys
- Art/video/photo contributions
- Climate Change Adaptation Team

## Resource Manager Input

- Clarify existing conservation goals & projects
- Anticipated climate change impacts in sector

## Literature Review

- Data and studies
- Scientific assessments



Source: ITEP's Climate Change Program

# Getting Started



Photo Credit: Leanna Begay, NNDFW

**Build support – secure “buy in” from tribal leadership and community**

**Initial scoping/decisions**

- Who will be involved?
- Technical assistance
- Funding needs

# Getting Started

## Get organized

- Climate change planning team, team lead
- Workshop
- Vision and guiding principles
- Tribal culture and values
- Guide for planning process
- What is important to tribe?
- Questions and decisions



# Decide on Your Planning Topics

Example planning topics include:



# Impact Assessment

## How is climate changing in your region?

Which sectors?

How? Where? When?

Probability

Consequences

## Gather relevant data; reach out to experts

Climate data assessments, tribal monitoring records, traditional knowledges

## Guidelines for Considering Traditional Knowledges in Climate Change Initiatives <https://climatetkw.wordpress.com/>



# Vulnerability Assessment

- **Vulnerability** = susceptibility to harm
- **Vulnerability assessment** = understand how climate change will affect tribe and its resources
  - **What** things are most vulnerable and least vulnerable
  - **Why** they are vulnerable and not vulnerable

# Assessing Vulnerability

- **Exposure:** How much sector is exposed to change in climate or its impacts
- **Sensitivity:** How much sector is affected
- **Adaptive Capacity:** Ability to adapt with minimum disruption and cost

## Vulnerability Matrix

SENSITIVITY	ADAPTIVE CAPACITY		
	HIGH	MEDIUM	LOW
HIGH	MEDIUM	MEDIUM-HIGH	HIGH
MEDIUM	MEDIUM-LOW	MEDIUM	MEDIUM-HIGH
LOW	LOW	MEDIUM-LOW	MEDIUM

# Change of Perspectives



usgs.gov



pinterest.com

navajotimes.com



NAU-ITEP



25<sup>th</sup> ANNIVERSARY

# Extreme Events



*Sand dune migration on Navajo Nation.  
Photo credit: M. Hi za, USGS*



Photo credit: US Climate Resiliency Toolkit



Photo credit: Josh O'Connor/USFWS



Photo credit: USDA  
NRCS

# Tribal Lands



Photo Credit: Leanna Begay, NNDFW



# Observations



# Identify Possible Adaptation Actions

- Improve Community Awareness Preparedness
  - Risk Prevention Planning
  - Hazard Mitigation
  - Emergency Management



navajotimes.com



Photo credit: USDA Forest Service



Flooding in Boulder, CO, 2013. Photo credit: FEMA News



# Identify Possible Adaptation Actions

- Prioritization
  - Key Topics/Themes
  - Consult with Partners
  - Methods of data collection
- Modify Policies, Practices, Procedures, Regulations
- Engineering Solutions



Bishop Paiute Tribe demonstration garden



Culvert installation, Jamestown, CO, 2013. Photo credit: Michael Rieger/FEMA



"Sand sausages" to stabilize sand dune on Navajo Nation

# Evaluate & Select Adaptation Actions

Benefits > costs?

Comprehensive? Flexible? Feasible?

Time frame? “Band-aid” fix?



Bridge closed due to storms and flooding in Wimberley, TX, June 2015. Photo Credit: FEMA/ Jocelyn Augustino



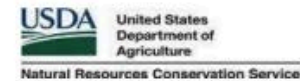
Photo Credit: Leanna Begay, NNDFW

Meet goals, guiding principles?



# Evaluate & Select Adaptation Actions

- Windows of opportunity?
- Authorities/Capacities?
- Funding needs/sources?
- Partners?



25<sup>th</sup> ANNIVERSARY

# Evaluate & Select Adaptation Actions



Photo Credit: Leanna Begay, NADFw

- **Group actions**
- Can be implemented now
- Require more info, resources, authorities
- Unsuitable now

# Write and Mainstream Plan

“Mainstream” into other existing plans



*Saint Regis Mohawk Tribe, NY*



*2010 Schultz Fire in Flagstaff, AZ*



# Implementation

Monitor

Evaluate

Modify



Quinault River, Quinault Indian Nation, WA

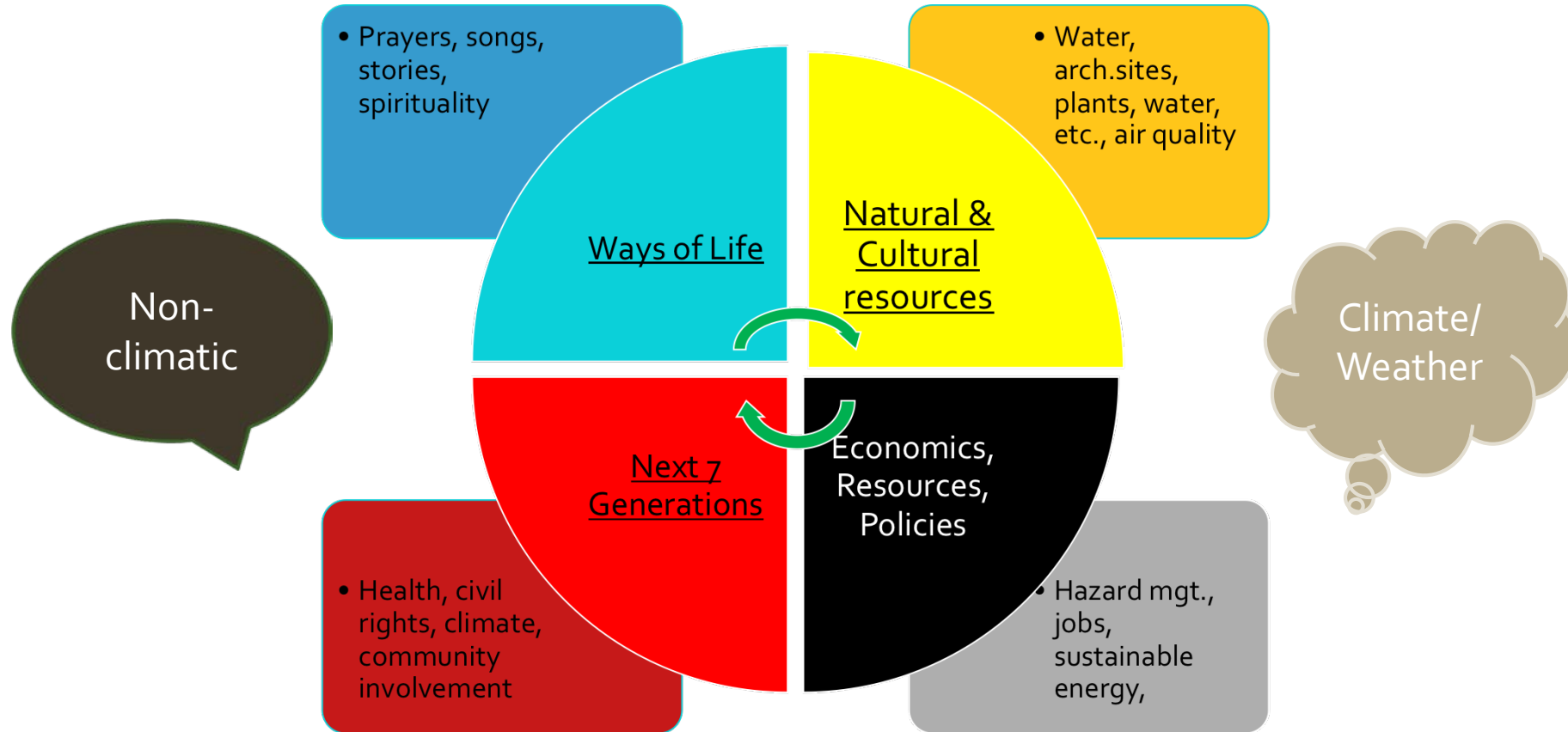


Replica of a traditional Yurok home, CA



Area burned by wildfire. Santa Clara Pueblo, NM, 2013. Photo credit: Adam DuBrowa/FEMA

# What is Important to Tribes



# Working Together

# Tribal Communities

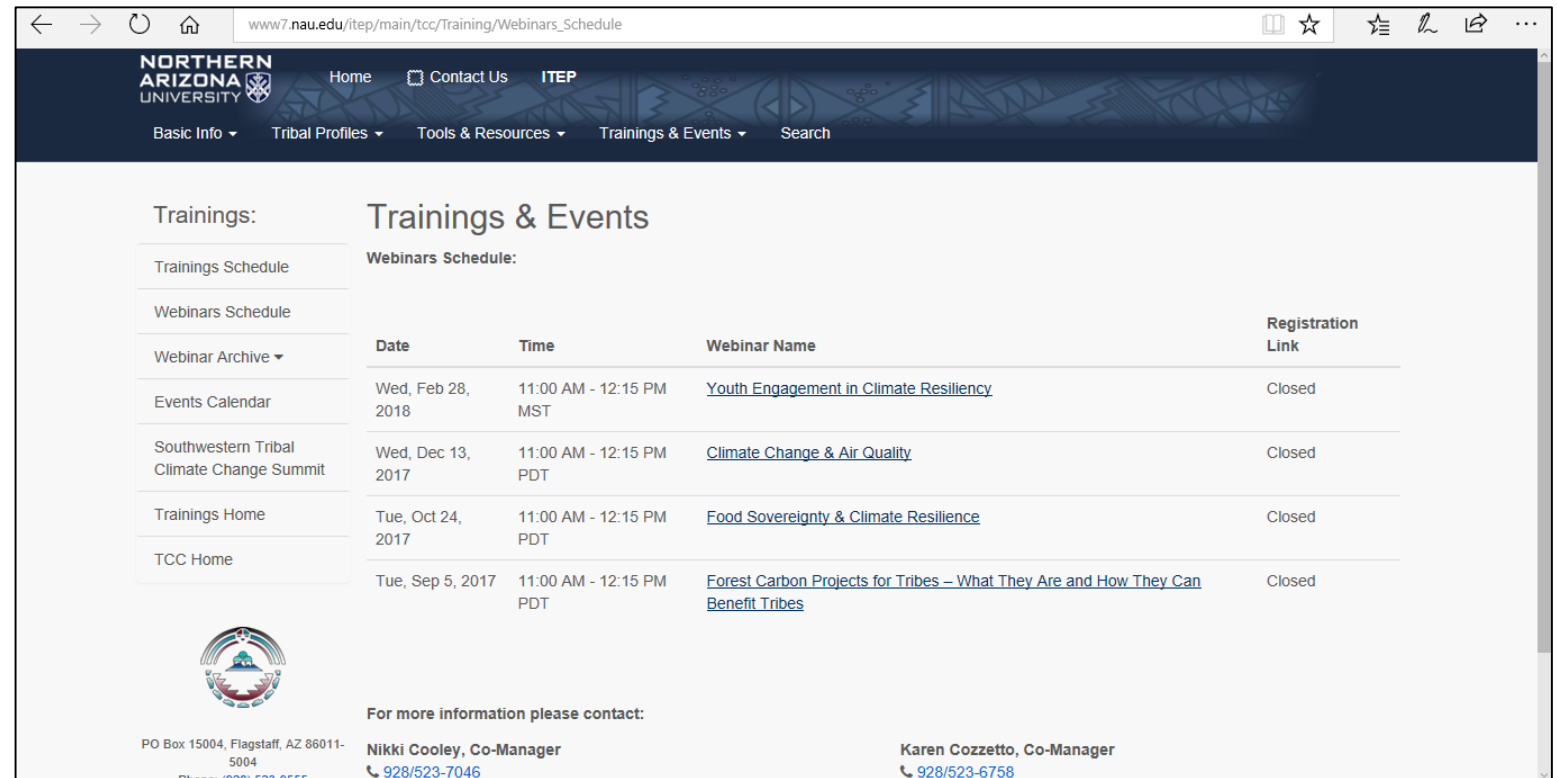


Photo Credit: Leanna Begay, NNDFW



# Online Webinars

- Webinar Archive is also available under “Training & Events” tab.
- National and Regional Focus



The screenshot shows the Northern Arizona University (NAU) website page for the Institute for Tribal Environmental Professionals (ITEP). The page is titled "Trainings & Events" and features a "Webinars Schedule" table. The table lists four webinars, all of which are marked as "Closed".

Date	Time	Webinar Name	Registration Link
Wed, Feb 28, 2018	11:00 AM - 12:15 PM MST	<a href="#">Youth Engagement in Climate Resiliency</a>	Closed
Wed, Dec 13, 2017	11:00 AM - 12:15 PM PDT	<a href="#">Climate Change &amp; Air Quality</a>	Closed
Tue, Oct 24, 2017	11:00 AM - 12:15 PM PDT	<a href="#">Food Sovereignty &amp; Climate Resilience</a>	Closed
Tue, Sep 5, 2017	11:00 AM - 12:15 PM PDT	<a href="#">Forest Carbon Projects for Tribes – What They Are and How They Can Benefit Tribes</a>	Closed

For more information please contact:

**Nikki Cooley, Co-Manager**  
Phone: 928/523-6555

**Karen Cozzetto, Co-Manager**  
Phone: 928/523-6758



# Previous Topics

(Webinar Archive):

- Youth Engagement in Climate Resiliency (2018)
- Food Sovereignty & Climate Resilience (2017)
- Climate Change & Air Quality (2017)
- About the Local Environmental Observer Network (2015)
- Impacts of Climate Change on Tribal Health (2015)
- Extreme Weather Events and Climate Change (2015)
- Climate Change Impacts on Fish and Wildlife (2015)



# Newsletters & Resources





**Institute for Tribal Environmental Professionals**

## Tribal Climate Change Newsletter


February/March 2018

Welcome to ITEP's Tribal Climate Change Newsletter. This monthly newsletter provides news items, resources, announcements about funding opportunities, conferences, and training, and other information relevant to tribal climate change issues.

### ITEP's Climate Change Program News



About Us:  
**Nikki Cooley**  
 Co-Program Manager  
[Nikki.Cooley@nau.edu](mailto:Nikki.Cooley@nau.edu)  
 Karen Cozzetta



UNIVERSITY OF OREGON

UO Home | Dept Index

## Tribal Climate Change Guide

The Tribal Climate Change Guide is part of the Pacific Northwest Tribal Climate Change Project. For more information, visit: <http://tribalclimate.uoregon.edu/>. If you would like to add to or amend information included in this guide, please complete this [google form](#). If you have additions or suggestions for this website, please email [kathy@uoregon.edu](mailto:kathy@uoregon.edu)!

Search:

Funding Tribal Adaptation Plans Tribal Profiles Climate Programs Scientists Publications Health Climate Education Disaster Resources Jobs Events

### Funding

The Tribal Climate Change Funding Guide is intended to provide up-to-date information on grants, programs and plans that may assist tribes in addressing climate change through a broad range of sectors. We will update this guide regularly, so please check back often. If you have questions or updates for this guide, email: [kathy@uoregon.edu](mailto:kathy@uoregon.edu). Please note that for entries that are **accepting applications continuously**, the grant deadline column will list "12/31/2017" as the grant deadline. This ensures that those grants will appear immediately after those grants with a set deadline.


Search by Keyword:  Geography:

Title	Organization	Grant Deadline	Description	Category	Funding Amount	Geography	Website
Program Funding for NRCS Conservation	Department of Agriculture	05/21/2018	Funding Opportunity #: USDA-NRCS-OK-CIG-001. The purpose of CIG is to stimulate the development and adoption of innovative conservation approaches and technologies in conjunction with agricultural production. CIG projects are expected to lead to the transfer of conservation technologies, management systems, and innovative approaches (such as market-based systems) to agricultural producers, into NRCS technical manuals and guides, or to the private sector. CIG generally funds pilot projects, field demonstrations,	development, innovation, conservation, technology,	\$10,000-\$75,000	Kentucky	<a href="#">Link</a>




# Tribal Assessments and Plans

**Climate-Change Vulnerability Assessment for Priority Wildlife Species**



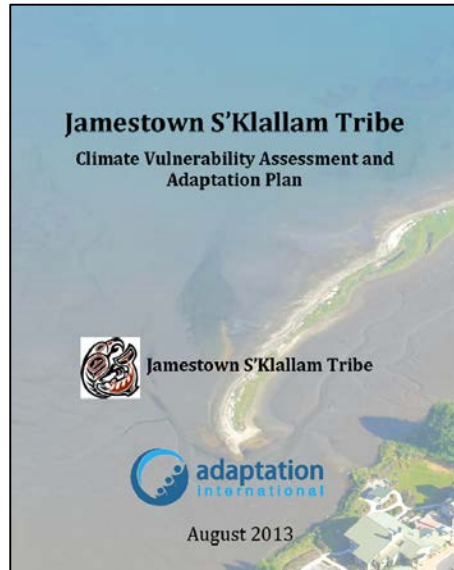
Prepared for:  
**The Navajo Nation Department of Fish and Wildlife**





**HEINZ CENTER**  
FOR SCIENCE  
ECONOMICS &  
ENVIRONMENT

In Partnership With:  
The H. John Heinz III Center for Science,  
Economics and the Environment

**Jamestown S'Klallam Tribe**  
Climate Vulnerability Assessment and  
Adaptation Plan




 Jamestown S'Klallam Tribe

 adaptation  
international


August 2013

**Swinomish Climate Change Initiative**  
Climate Adaptation Action Plan




**Swinomish Indian Tribal Community**

Office of Planning and Community Development  
La Conner, WA 98257  
October 2010




**Climate Change Strategic Plan**




September 2013

Coast-Adjacent Salish and Kootenai Tribes of the Flathead Reservation

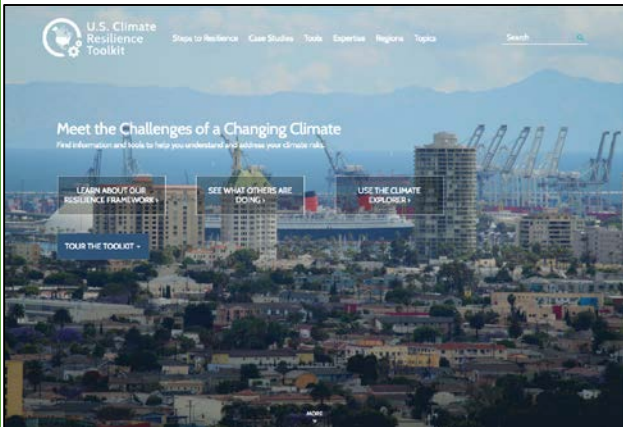


Climate Change Adaptation Plan for  
Akwesasne

Draft August 30, 2013



# Adaptation Planning Frameworks

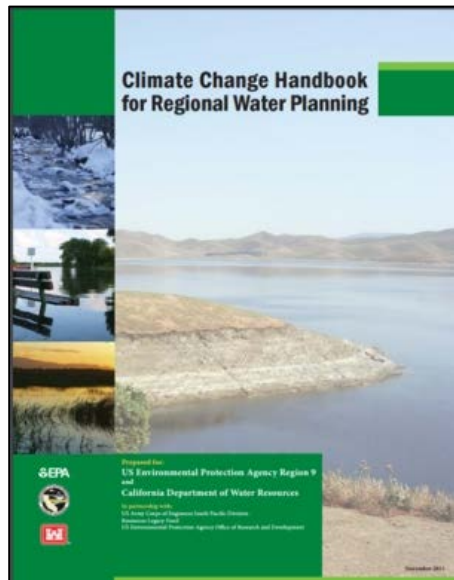


Available at: <http://toolkit.climate.gov>

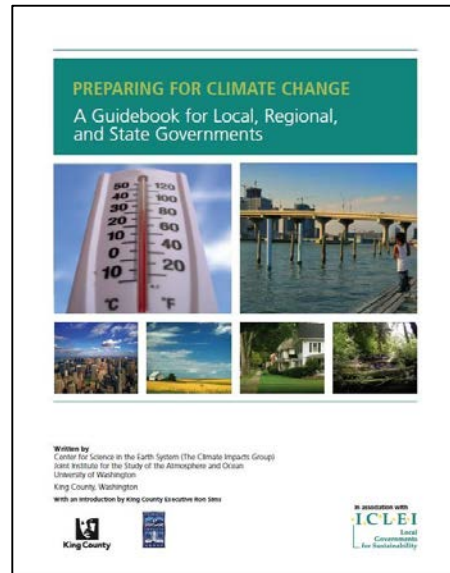
A screenshot of the U.S. Climate Resilience Toolkit website. The header includes the logo, navigation links (Steps to Resilience, Case Studies, Tools, Expertise, Regions, Topics), and a search bar. The main content area is titled 'TOOLS' and features a paragraph: 'Looking for climate data? Need to compile a Climate Vulnerability Assessment or Adaptation Plan? Our catalog of more than 200 digital tools can help you take steps to build resilience, from engaging a community to developing a climate action plan. Here's one example of the tools in our catalog:'. Below this is a photo of a group of people playing a board game. To the right of the photo is the text: 'Extreme Event Game &gt; Is your community ready for an extreme event? In one hour, groups of 12-48 players learn how important it is to build coalitions across all sectors of a community and invest in short-term and long-term resources to make their city more resilient.' Below the photo and text are buttons for 'BROWSE ALL TOOLS &gt;' and 'MORE'. At the bottom, the 'REGIONS' section is visible, with a link for 'ALASKA AND THE ARCTIC &gt;' and a map of Alaska.



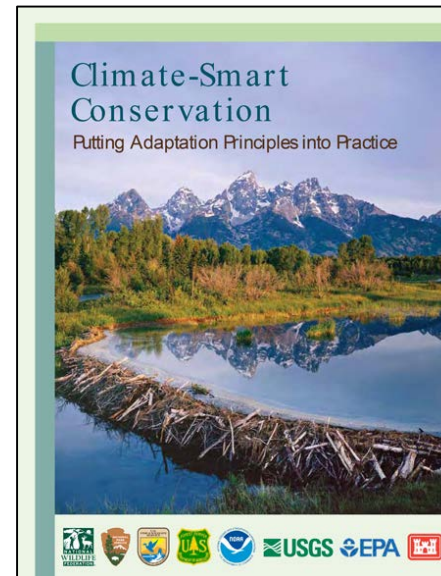
# Adaptation Planning Frameworks



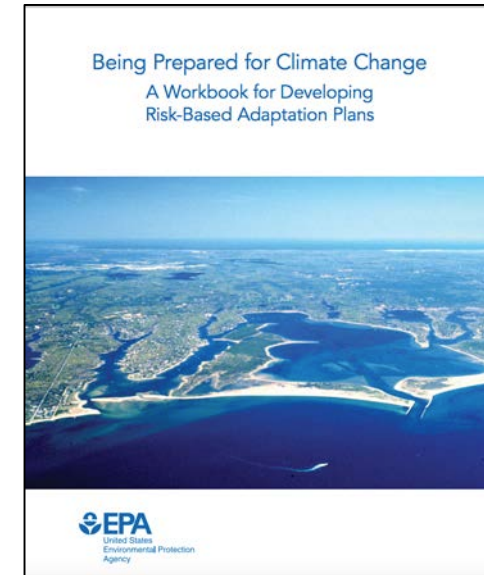
<http://www.adaptationclearinghouse.org/resources/climate-change-handbook-for-regional-water-planning.html>



[http://cses.washington.edu/cig/fpt/guidebook.sht\\_ml](http://cses.washington.edu/cig/fpt/guidebook.sht_ml)



[https://www.nwf.org/~media/PDFs/Global-Warming/Climate-Smart-Conservation/NWF-Climate-Smart-Conservation\\_5-08-14.pdf](https://www.nwf.org/~media/PDFs/Global-Warming/Climate-Smart-Conservation/NWF-Climate-Smart-Conservation_5-08-14.pdf)



[https://www.epa.gov/sites/production/files/2014-09/documents/being\\_prepared\\_workbook\\_508.pdf](https://www.epa.gov/sites/production/files/2014-09/documents/being_prepared_workbook_508.pdf)



# USEPA Resources for Tribes

- CASTNET-Air Monitoring Program
- C.C. Indicators in the U.S.
- Greenhouse Gas Reporting for Tribal Lands
- Climate Protection Partnerships Program
- Tribal GHG Inventory Tool
- Affordable Housing & Energy Document (coming Summer 2019)



# Health Climate Change Adaptation Planning (tribalclimatehealth.org)

The screenshot shows the homepage of tribalclimatehealth.org. At the top, the URL 'tribalclimatehealth.org' is in the address bar, and the Tribal Climate Health logo is on the left. A navigation menu includes 'About', 'Learn', 'News/Events', and 'Connect'. The main banner features a photo of a healthcare worker in a white coat and mask attending to a patient. Overlaid on the photo is the text 'Climate Change and Health 101' and the question 'How does climate change impact public health?'. A 'START LEARNING' button is centered below the text. Below the banner, a section titled 'The Latest in Tribal Climate Change and Health' contains three featured items: 1) A map of the United States with a color-coded legend, titled 'Total U.S.' and 'Provides information on how climate change impacts public health. Many of...'. 2) A graphic with a blue and orange background, titled 'Nominate a Tribe for a Climate Adaptation Award by April 13th'. 3) A graphic with a green and orange background, titled 'New Publication Released on "Priorities in Tribal Public Health" 2018'.



# Learn about Potential Climate Change Impacts

**National Climate Assessment:** <http://nca2014.globalchange.gov/>

**Indigenous Peoples Chapter of the National Climate Assessment:**  
<http://nca2014.globalchange.gov/highlights/report-findings/indigenous-peoples>

**U.S. Climate Resilience Toolkit:** <https://toolkit.climate.gov/>

**ITEP's Tribes and Climate Change Website:**  
<http://www7.nau.edu/itep/main/tcc>



# Adaptation Toolkit

Home Contact Us Basic Info ▾ Tribal Profiles ▾ Tools & Resources ▾ Trainings & Events ▾ Search

Resources:

ORCA Database

Funding

National and Regional  
Contacts

Newsletters

Adaptation Planning Tool  
Kit

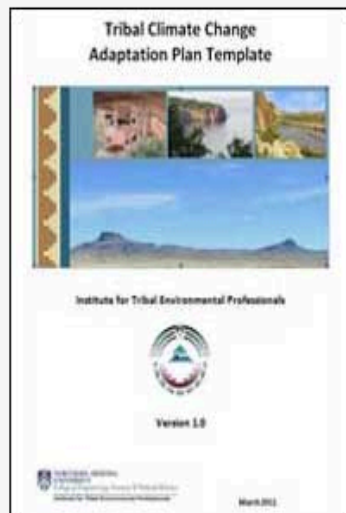
Fact Sheets

ITEP Reports

Resources Home

TCC Home

## Climate Change Resources



### Adaptation Planning Tool Kit

This "toolkit" is a collection of templates and other resources developed by the Institute for Tribal Environmental Professionals (ITEP) to assist tribes in their climate change adaptation planning process. The materials provided are not "one-size-fits-all" solutions, and users are encouraged to modify the materials to better represent the needs and priorities of their own tribe. The primary users of these materials will be the tribe's climate change working group.

1. [Adaptation Planning Background Material \[docx\]](#)
  2. [Checklist \[doc\]](#)
  3. [Template: Tribal Climate Change Adaptation Planning Guide \[docx\]](#)
  4. [Template: Tribal Resolution for a Climate Change Adaptation Initiative \[doc\]](#)
  5. [Worksheet: Adaptation Planning \[doc\]](#)
  6. [Spreadsheet: Adaptation Planning \[xls\]](#)
  7. [Template: Tribal Climate Change Adaptation Plan \[doc\]](#)
  8. [Guides and Tools for Climate Change Adaptation Planning \[xlsx\]](#)
  9. [Example Tribal Climate Change Assessments and Plans \[xlsx\]](#)
- > [Toolkit \[zip\]](#)



# Tribal Resolution: support/buy-in

## [Tribe] RESOLUTION

### TO ESTABLISH A CLIMATE CHANGE ADAPTATION INITIATIVE

WHEREAS, the [Tribe] is a federally recognized tribe, recognized by the United States Government and all of its Governing bodies and agencies; and

WHEREAS, the [Climate Change Adaptation Initiative] will be included in the [Code under which the initiative will be housed]; and

WHEREAS, there is overwhelming scientific evidence of climate change driven in part by the release of greenhouse gases into the atmosphere, the effects of which may significantly affect the [Tribe] through [local climate change impacts], and other associated effects on the local environment, natural resources, and infrastructure on which the [Tribe] has traditionally relied; and

WHEREAS, inaction in the present may yield negative social, environmental, cultural, and economic consequences in the near future; and

WHEREAS, [Department] will oversee and coordinate the [Climate Change Adaptation Initiative]; and

WHEREAS, [Department] will [implement proposed actions]; and

WHEREAS, the [Department] will seek funding to support the [Climate Change Adaptation Initiative]; and

WHEREAS, the [Climate Change Adaptation Initiative] will create a more resilient community, able to cope with the impacts of climate change on the tribe's social, environmental, cultural, and economic welfare; and

WHEREAS, the [Climate Change Adaptation Initiative] will remain in effect indefinitely because the [Tribe] will need to continuously adapt to climate change and its impacts;

**NOW THEREFORE BE IT RESOLVED** that the [TRIBAL COUNCIL] supports the [Tribe's] [Climate Change Adaptation Initiative]:

To undertake efforts to determine the potential local effects of climate change on the [Tribe]; and

To develop policies and strategies for addressing the potential effects of climate change on the [Tribe], including [policies and strategies]; and

To communicate and coordinate with other Indigenous Peoples and government entities and jurisdictions to address potential climate change impacts; and

To communicate to and with the local community about issues and concerns regarding the potential local impacts of climate change; and

THE [TRIBAL COUNCIL] FURTHER RESOLVES for the [Department] to report to the Council every quarter on the [Climate Change Adaptation Initiative's] advancements.

By the authority of these individuals as representatives and leaders of the [Tribe], this resolution is made [date].





# Profiles/Case Studies

Basic Info ▾ Tribal Profiles ▾ Tools & Resources ▾ Trainings & Events ▾ Search

Tribes: Southwest

Fort McDowell Yavapai Nation

ITEP's SW Tribal Climate Change Project

Jemez Pueblo Renewable Energy

Mescalero Apache Tribe

Native Seeds/Search

Navajo Nation Dune Study

Pueblo of Tesuque

Santa Ynez Band of Chumash Indians


Tohono O'odham

Profiles Home

## Southwest

### Native Seeds/Search: Cultivating the Past to Preserve the Future

[Click HERE](#) for PDF version.



"Old is new again," says Nicholas Garber, Conservation Program Manager at Native Seeds/SEARCH (NS/S), a nonprofit seed bank, grower and seed-distribution center based in Tucson, Arizona. Garber is referring to the rich genetic diversity embodied in seeds harvested from some 1900 Southwestern US and northern Mexico "accessions" (plants with unique genetic backgrounds) the organization maintains. Most were developed over time by indigenous farmers cultivating smaller fields, some of which have been producing food for centuries.

As the climate changes, preserving highly adaptable plants will become more and more crucial. "We manage the crops in ways that preserve their genetic background, their biodiversity," Garber says, "and at a population size that's big enough to keep the genetics of the accessions healthy. One novel aspect of the collection is that it's mostly 'land-race seeds,' which are often discounted because the breeding has taken place in the field by farmers [rather than through large-scale seed companies producing for "commodity farmers"]—we've really been gifted by the ancient farmers who have been growing in this area despite the challenges. You end up with a really diverse genetic background with every lineage. It's that diversity that adversity can hone to make these plants adapt to different environments."

NS/S assembled its original collection through links with anthropologists conducting research in indigenous Tarahumara and Mayo communities in northern Mexico, under the US Dept. of Agriculture's "Meals for Millions" program. Over the nonprofit's 35-year existence, its seed collection has expanded significantly, mainly through gifts from and exchanges with growers in a geographic region that Garber says stretches "from Las Vegas, New Mexico, to Las Vegas, Nevada, and from Durango, Colorado, to Durango, Mexico." The majority of accessions come from tribal and other indigenous growers, including Hispanic communities in northern New Mexico.



# Adaptation Trainings

Dates	Course Name	Location	Registration	*Deadline
<b>2018</b>				
Starts in June	<a href="#">CC 201: Work in a group to develop a climate change adaptation plan, join a facilitated cohort (1.5 years)</a>	Online	Closed	April 25
June 5-7	<a href="#">CC 101 - Introduction to Climate Change Adaptation Planning (3 days)</a>	Glennallen, AK	Closed	May 4
July 30- August 2	<a href="#">CC 101 - Introduction to Climate Change Adaptation Planning (3 days)</a>	Choctaw Nation, MS		
August 7-9	<a href="#">CC 101 - Introduction to Climate Change Adaptation Planning (3 days)</a>	San Diego, CA		
<b>2017</b>				
Feb 21-23	<a href="#">CC 101 - Introduction to Climate Change Adaptation Planning (3 days)</a>	Anchorage, AK	Closed	
Mar 14-16	<a href="#">CC 101 - Introduction to Climate Change Adaptation Planning (3 days)</a>	Spokane, WA	Closed	
June 6-8	<a href="#">CC 101 - Introduction to Climate Change Adaptation Planning (3 days)</a>	Albuquerque, NM	Closed	
August 22-24	<a href="#">CC 101 - Introduction to Climate Change Adaptation Planning (3 days)</a>	Presque Isle, Maine	Closed	



# Facilitated Cohort

- 8 Tribes
- Staggered Beginning Cohorts
- Focus on Particular Topics
  - e.g. Cultural Resources, Ecosystem, Food Sovereignty
- 1.5 year Time for Completed Climate Change Adaptation Plan
- Bi-Weekly Webinar Meetings
- Staff Commitment
- Facilitated Cohort Training is FREE



**Take 15min to:**  
**Write Down & Share What**  
**You Know is Being Done**

# Break into small groups Take index cards & write!





# What Tribes are Doing

- **Pala Tribe:** recycling and collection center and treated waste water going to water orange groves



**Aroostook Band of Micmac:**  
tribal fishery and small-scale  
garden to feed tribe traditional  
foods and local economy.





# What tribes are doing?

## Working Together to Address Climate Change in the 1854 Ceded Territory



- 2017 Climate Adaptation Leadership Award for Natural Resources (NAF)

### *Colville Tribal Fish Hatchery*

- Economics
- Traditional Foods
- Adaptive Mgt. Plan



# Examples

## Hodilzin

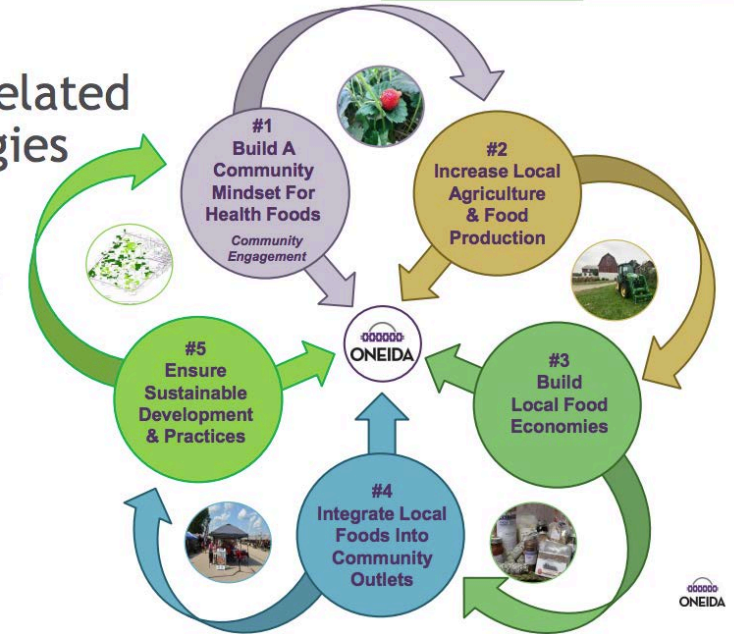
- ❖ Sacred Ecology: Dine Food Systems were built in sync with the natural ecological processes. Climate Change demands we restore a proper ag. system that is resilient to the projected changes
- ❖ Nahasdzaán dóó Yá'diłhił Bitsáádeę' Beehaz'aanii – Diné Natural Laws) “The four sacred elements of life; air, light/ fire, water and earth/ pollen in all their forms must be respected, honored and protected for they sustain life . . . The Diné have the sacred obligation and duty to respect and protect all that was provided for we are designated as the stewards for these relatives through our use of the sacred gifts of language and thinking . . . It is the duty and responsibilities of the Diné to protect and preserve the beauty of the natural world for future generation” (FDL, p. 6)



## Oneida Nation

### Five Inter-related Strategies

For an Integrated Agricultural Food System



# Examples

**The S.T.A.R School**



**Luepp Family Farms**



# Thank you

## Contact us at:

Leanna Begay, Program Coordinator  
[Leanna.Begay@nau.edu](mailto:Leanna.Begay@nau.edu), 928-523-6252

Nikki Cooley, Co-Program Manager  
[Nikki.Cooley@nau.edu](mailto:Nikki.Cooley@nau.edu), 928-523-7046

Karen Cozzetto, Co-Program Manager  
[Karen.Cozzetto@nau.edu](mailto:Karen.Cozzetto@nau.edu), 928-523-6758

Colleen Davis, Administrative Assistant  
[Colleen.Davis@nau.edu](mailto:Colleen.Davis@nau.edu), 928-523-6327

For more information about ITEP's Tribal Climate Change Program, please visit our website:  
<http://www7.nau.edu/itep/main/ClimateChange/>

